

The background of the entire page is decorated with various-sized, realistic-looking water droplets. Some are large and prominent, while others are small and scattered. The droplets have a soft, white-to-light-gray gradient and a subtle shadow, giving them a three-dimensional appearance as if they are floating or falling on a light surface.

Milano Unica 2024AW

**WASHABLE SILK**

***CEREZACARMEN***

NIHON SANMO DYEING CO., LTD.

***CEREZACARMEN*** is the first machine washable silk in the world!



- Maintains the characteristics of silk after machine-washing many times.

**Solved the troubles of general (unprocessed) silk!**



# CEREZACARMEN FABRIC



**24AW-101**

28 Momme Dechine  
Width 140cm 122g/m<sup>2</sup>  
C/#Dark Red



**24AW-102**

28 Momme Dechine  
Width 140cm 122g/m<sup>2</sup>  
C/#Matte Green



**24AW-103**

16 Momme Dechine  
Width 110cm 65g/m<sup>2</sup>  
PFP



**24AW-104**

23 Momme Plain Fabric  
Width 115cm 100g/m<sup>2</sup>  
PFP



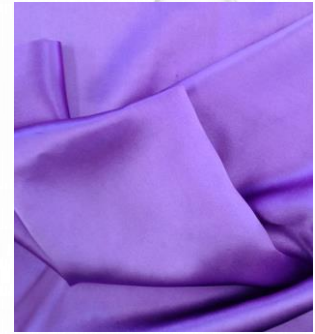
**24AW-105**

16 Momme Satin  
Width 140cm 76g/m<sup>2</sup>  
PFP



**24AW-106**

16 Momme Satin  
Width 140cm 76g/m<sup>2</sup>  
C/# Black



**24AW-107**

19 Momme Satin  
Width 140cm 88g/m<sup>2</sup>  
C/#Purple



**24AW-108**

19 Momme Satin  
Width 140cm 88g/m<sup>2</sup>  
C/#Lime Green



**24AW-109**

19 Momme Satin PU  
Width 140cm 88g/m<sup>2</sup>  
PFP



**24AW-110**

19 Momme Satin PU  
Width 140cm 88g/m<sup>2</sup>  
C/# Yellow



**24AW-111**

Silk Denim  
Width 140cm 382g/m<sup>2</sup>  
C/# Blue



**24AW-112**

Silk/Wool plain Fabric  
Width 150cm 134g/m<sup>2</sup>  
C/#White/Blue Black  
Gingham



# CEREZACARM

# CIRCULAR KNITTING



**24AW-301**

2/240 Smooth Stitch  
Width 150cm 215g/m<sup>2</sup>  
C/# Black



**24SS-302**

2/120 Fraise Stitch 18G  
Width 34cmW 136g/m<sup>2</sup>  
C/#Black



**24AW-303**

2/60 Plain Stitch  
Width 155cm 330g/m<sup>2</sup>  
C/# Black



**24AW-304**

2/60 Plain Stitch  
Width 155cm 330g/m<sup>2</sup>  
C/# Navy Blue



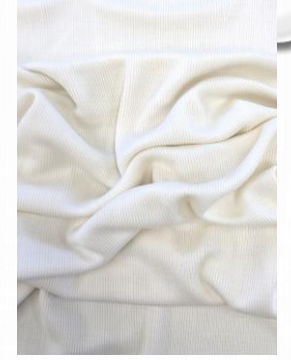
**24AW-305**

2/60 Plain Stitch  
Width 155cm 330g/m<sup>2</sup>  
C/# Beige



**24AW-306**

2/120 Rib Stitch  
Width 36cmW 185g/m<sup>2</sup>  
C/# Black



**24AW-307**

2/120 Rib Stitch  
Width 36cmW 185g/m<sup>2</sup>  
C/# White



**24AW-308**

2/120 Rib Stitch  
Width 36cm W 185g/m<sup>2</sup>  
C/# Pink



**24AW-309**

2/120 Rib Stitch  
Width 36cmW 185g/m<sup>2</sup>  
C/# Purple



**24AW-310**

2/120 Rib Stitch  
Width 36cm W 185g/m<sup>2</sup>  
C/# Orange



**24AW-311**

1/80 Rib Stitch 18G  
Silk/Wool  
Width 24cm W 139g/m<sup>2</sup>  
C/# White



**24AW-312**

1/80 Rib Stitch 18G  
Silk/Wool  
Width 24cm W 139g/m<sup>2</sup>  
C/# Moss Green



**24AW-313**

2/80 Plain Stitch 28G  
Silk/Wool  
Width 150cm 177g/m<sup>2</sup>  
C/#Beige

# CEREZACARMEN

# FILAMENT MATERIAL



**24AW-401**

Gum Gum Silk  
Fraise Stitch 18G  
Width 49cmW 147g/m<sup>2</sup>  
C/# White



**24AW-402**

Gum Gum Silk  
Plain Stitch 28G  
Width 66cm W 102g/m<sup>2</sup>  
C/# Pale Blue



**24AW-403**

Gum Gum Silk Rayon/Silk  
Plain Fabric  
Width 133cm 84g/m<sup>2</sup>  
C/# Taupe



# CEREZACARMEN MIXED WEAVE FABRIC



**24AW-501**

Linen/ Silk  
Twill Weave  
Width 118cm 167g/m<sup>2</sup>  
C/# Blue



**24AW-502**

Linen/ Silk  
Plain Fabric  
Width 114cm 179g/m<sup>2</sup>  
C/# Vintage Blue



**24AW-503**

Linen /Silk /Wool  
Plain Fabric  
Width 116cm 178g/m<sup>2</sup>  
C/# Orange



**24AW-504**

Linen /Silk /Wool  
Plain Fabric  
Width 116cm 178g/m<sup>2</sup>  
C/# Brown



**24AW-505**

Linen/ Silk Dungaree  
Width 162cm 165g/m<sup>2</sup>  
C/# White



**24AW-506**

Linen /Silk Dungaree  
Width 162cm 165g/m<sup>2</sup>  
C/# Black

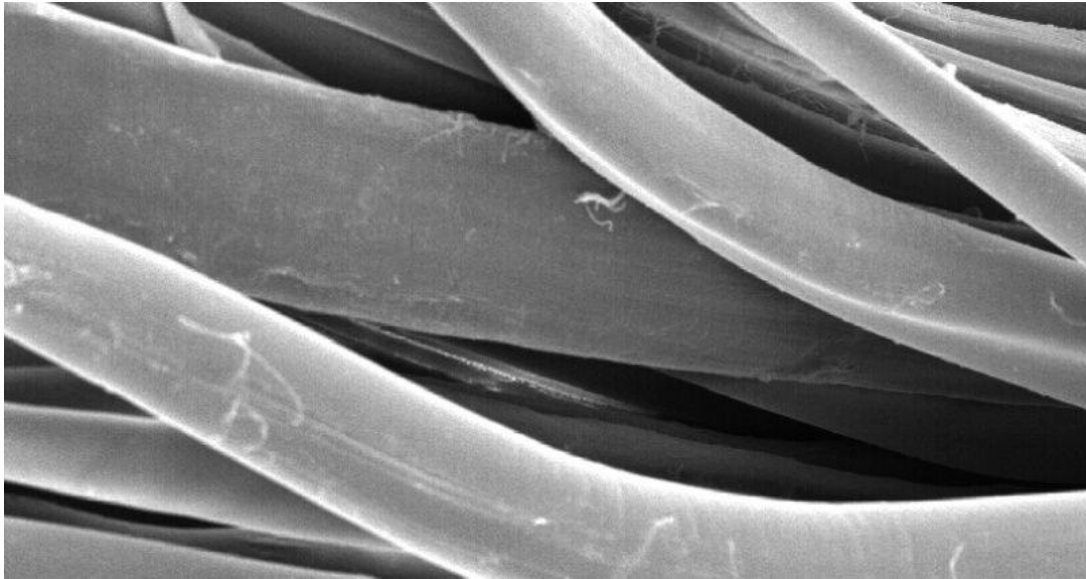


**24AW-507**

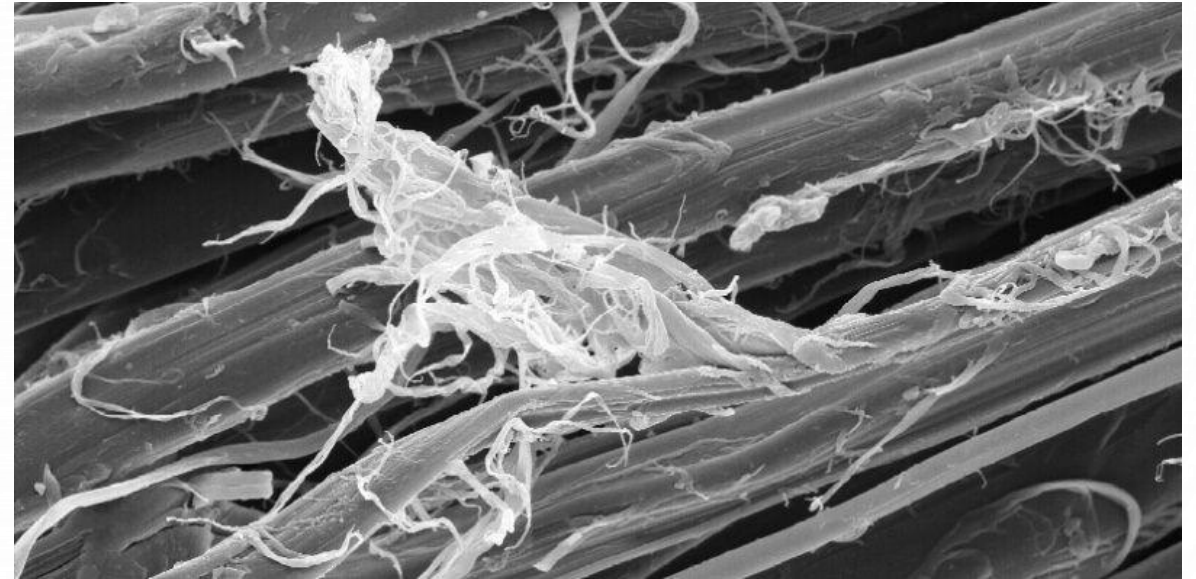
Linen /Silk Dungaree  
Width 162cm 165g/m<sup>2</sup>  
C/# Blue Black

Surface of silk fiber after machine washing 30 times  
(Electron microscope photograph x1000)

*CEREZACARMEN*



Unprocessed silk



**Damages on fibroin**



**Cause of  
Whitening(Fibrillation)**



# Comparison between *CEREZACARMEN* and unprocessed silk.

After machine washing 30 times



After machine washing 10 times





# Having no anxious troubles in silk!

## 【Dyeing】

- Possible to be dyed as same as natural fiber either in a jet dyeing machine.
- Fibrillation doesn't occur during dyeing.
- Could be dyed with acid dye and reactive dye for cellulose.

## 【Washing】

- Washable in a household washing machine.
- Washable with an alkaline detergent you usually use at home. (Washable with an neutral detergent)
- When drying it, please fix the shape and dry it in a shade.

# Safety

- Silk consists of 18 kinds of amino acid like a human and molecules of amino acid includes OH group, COOH group, NH<sub>2</sub> group and NH group.
- Regarding Washable Silk, CEREZACARMEN, the polymer compound is cross-linked between the molecules, which makes it increase washing durability.
- Passed a safety test of a human skin.



# About silk



# Advantages of silk

- Made of protein containing 18 kinds of amino acids.
  - Close to human skin.
- Excellent moisture absorption and breathability
  - Warm in the winter and cool in the summer
- Static electricity does not easily occur.
- It is said that there is also a UV cut effect.



# Disadvantages of general(unprocessed)silk

- Hard to handle
- Washing in a household washing machine/Jet dyeing are not available.

【After machine-washing/jet dyeing 】

- Gets hard.
- Shrinks.
- Looks color-fading (Whitening caused by fibrillation)
- Generation of fluff
- Loss of luster

# **NIHON SANMO DYEING CO., LTD.**

**35 BUTAI-CHO FUSHIMI-KU KYOTO 612-8338 JAPAN**

**TEL: 81-75-623-0057 FAX:81-75-621-2922**

<https://www.sanmo.co.jp/en/index.html>

[info@sanmo.co.jp](mailto:info@sanmo.co.jp)